

SPECIFICATIONS:

PART 1 - MATERIAL:

1.01 Door Guides: Door guides are to be manufactured from 16 gauge (0.060" min.) ASTM A-653 steel, hot dipped galvanized per ASTM A-924 (G-40). Edges covered with polypropylene runners for smooth operation. Guide windlock bars are to be manufactured from 12 gauge (0.100" min.) ASTM A-653 steel, hot dipped galvanized per ASTM A-924 (G-40).

1.02 Door Curtains: Door curtains are to be manufactured from 26 gauge Grade 80 steel per ASTM A-653, hot dipped galvanized per ASTM A-924 (G-40).

1.03 Door Bracket: Door brackets are to be manufactured from 10 gauge (0.134") ASTM A-653 steel, hot dipped galvanized per ASTM A-924.

1.04 Bottom Bar Assembly: Door bottom bar to be roll formed from 22 gauge (0.030" min.) ASTM A1011 galvalume, hot dipped, min. yield of 50 ksi. Door backup angle to be manufactured from 12 gauge ASTM A-653 steel, hot dipped galvanized per ASTM A-924 (G-40).

1.05 Door Curtain Windlock: Door curtain windlocks are located as required to meet specific windload & manufactured from 10 gauge HR P&O steel, with Zinc JS-500 coating capable of withstanding salt spray testing per ASTM B117 for a minimum of 500 hours. Each windlock secured to the door curtain with two 3/16" zinc plated rivets.

PART 2 - TESTING:

2.01 General: Structural Performance under Uniform Load per ASTM E 330 to safely resist a positive or negative wind load as noted. A test load of 1.5 x design load has been used. Design Load varies with door size.

PART 3 - EXECUTION:

3.01 General: Trac-Rite rolling steel doors shall be installed following Trac-Rite assembly Instructions.

MODEL 988WL ROLLING CURTAIN DOOR

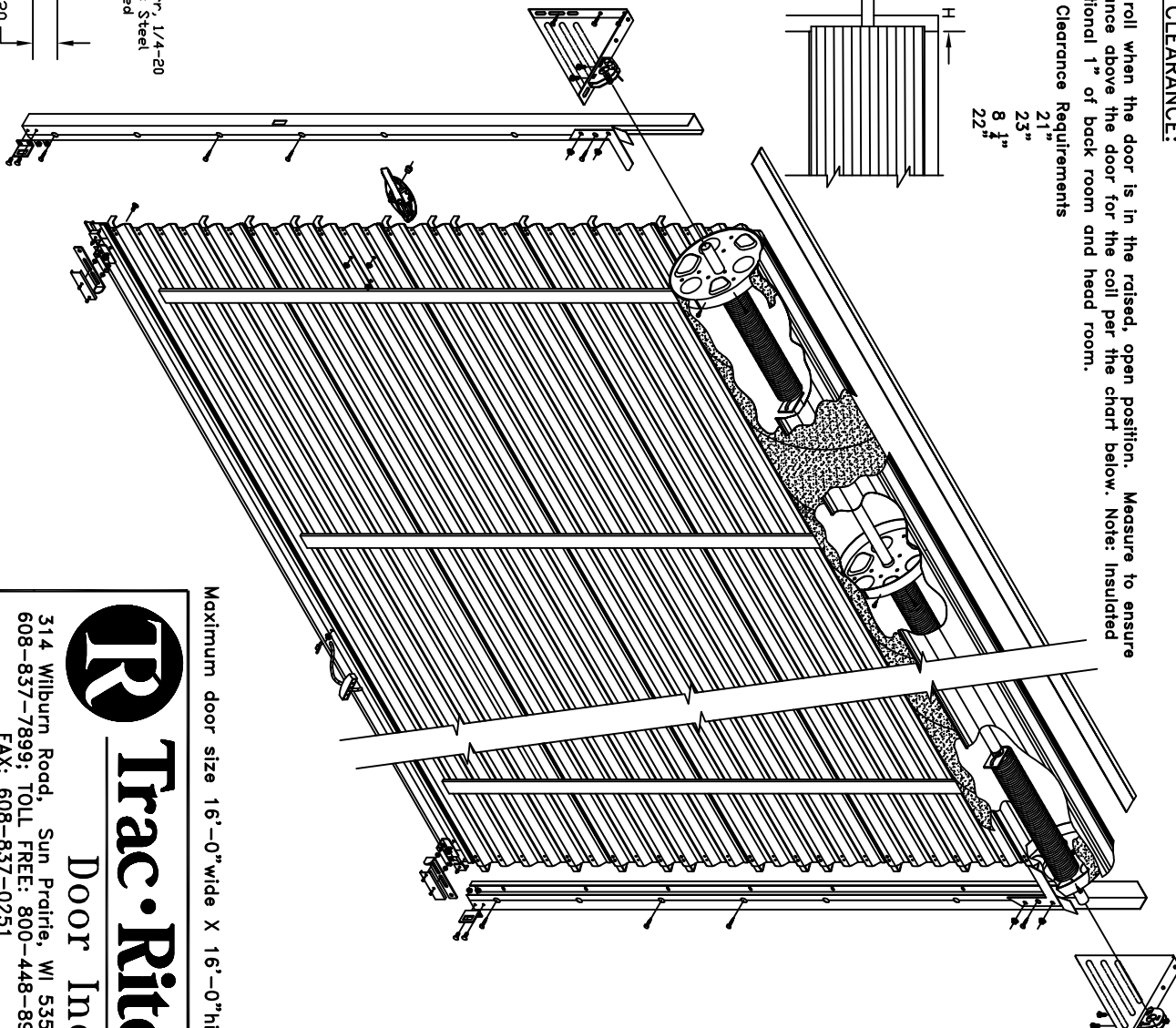
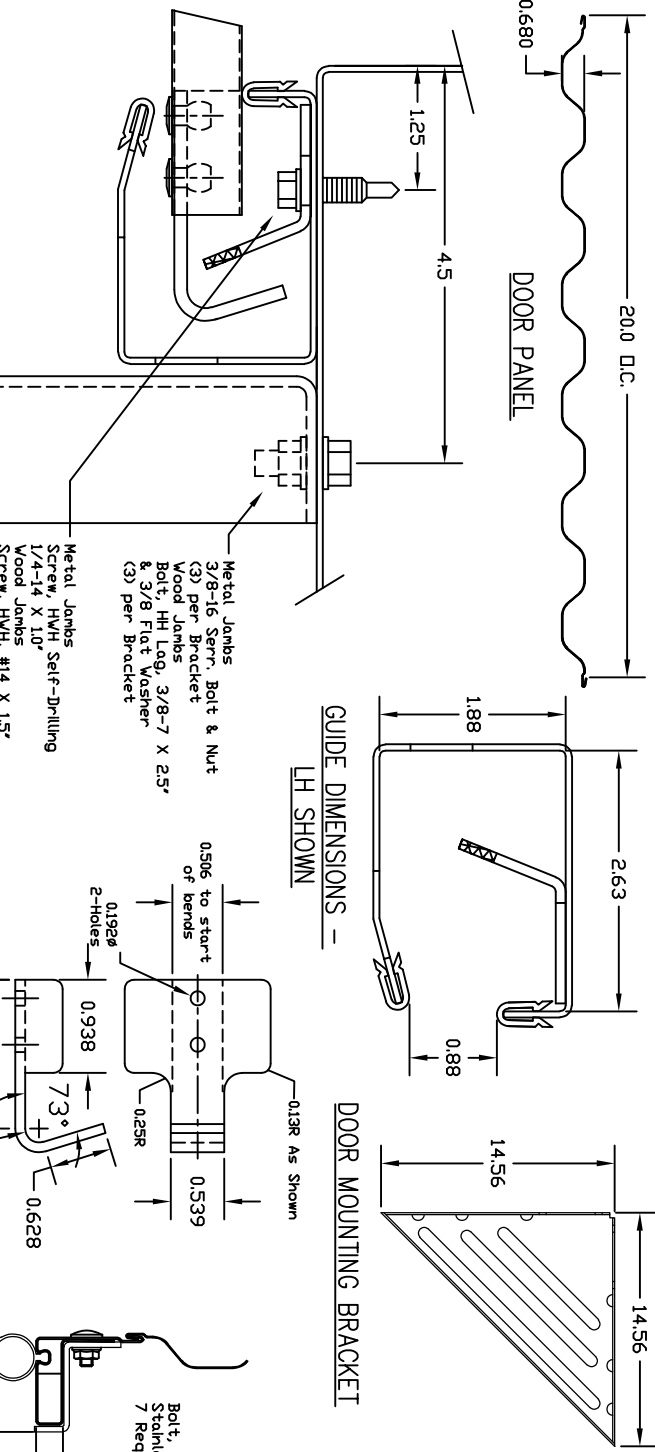
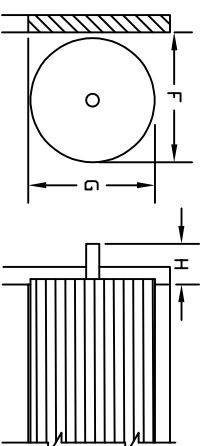
988WL DR

OVERHEAD DOOR CLEARANCE:

The door coils into a roll when the door is in the raised, open position. Measure to ensure there is enough clearance above the door for the coil per the chart below. Note: Insulated doors require an additional 1" of back room and head room.

Minimum Clearance Requirements

F = Back Room	21"
G = Head Room	23"
H = Side Room	8 1/2"
H = Motor Operator	22"



JAMB DETAIL

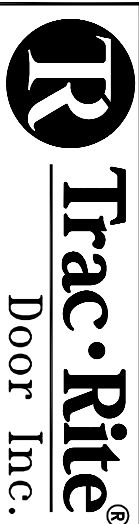
Metal Jamb
3/8-16 Serr. Bolt & Nut
(3) per Bracket
Wood Jamb
Bolt, HH Lag, 3/8-7 X 2.5"
& 3/8 Flat Washer
(3) per Bracket

Metal Jamb
Screw, HVH Self-Drilling
1/4-14 X 1.0"
Wood Jamb
Screw, HVH, #14 X 1.5"

Mounting Bracket

BOTTOM BAR ASSEMBLY

© 2023, TRAC-RITE DOOR, INC.



Door Inc.

314 Wilburn Road, Sun Prairie, WI 53590
608-837-7899; TOLL FREE: 800-448-8979
FAX: 608-837-0251

Maximum door size 16'-0" wide X 16'-0" high.

DRAWN BY _____
CHECKED BY _____
DATE _____

SCALE: NONE
SHEET 1 OF 1

Trac-Rite Order # _____