

SPECIFICATIONS:

PART 1 – MATERIAL:

- 1.01 Door Guides: Door guides are to be manufactured from 18 gauge (0.047" min.) ASTM A-653 steel, hot dipped galvanized per ASTM A-924 (G-40). Edges covered with polypropylene runners for smooth operation.
- 1.02 Door Curtains: Door curtains are to be manufactured from 26 gauge Grade 80 steel per ASTM A-653, hot dipped galvanized per ASTM A-924 (G-40).
- 1.03 Door Bracket: Door brackets are to be manufactured from 10 gauge (0.134") ASTM A-653 steel, hot dipped galvanized per ASTM A-924.
- 1.04 Bottom Bar Assembly: Door bottom bar to be roll formed from 22 gauge (0.030" min.) ASTM A1011 galvalume, hot dipped, min. yield of 50 ksi. Door backup angle to be manufactured from 12 gauge ASTM A-653 steel, hot dipped galvanized per ASTM A-924 (G-40).

PART 2 – TESTING:

2.01 General: Structural Performance under Uniform Load per ASTM E 330 to safely resist a positive or negative wind load as noted. A test load of 1.5 x design load has been used. Design Load varies with door size.

PART 3 – EXECUTION:

3.01 General: Trac-Rite rolling steel doors shall be installed following Trac-Rite assembly instructions.

MODEL 977 ROLLING CURTAIN DOOR

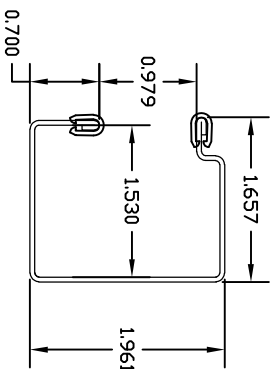
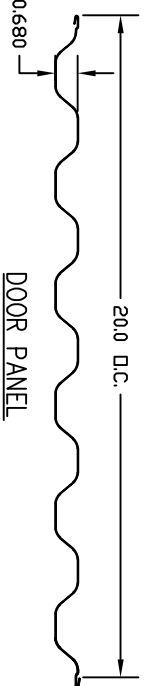
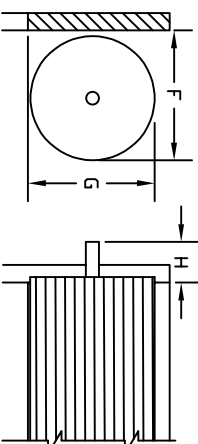
977 DR

OVERHEAD DOOR CLEARANCE:

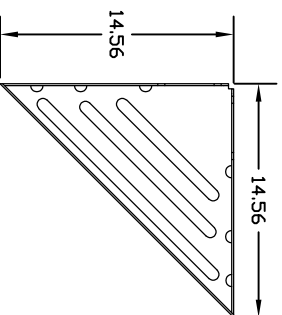
The door coils into a roll when the door is in the raised, open position. Measure to ensure there is enough clearance above the door for the coil per the chart below. Note: Insulated doors require an additional 1" of back room and head room.

Minimum Clearance Requirements

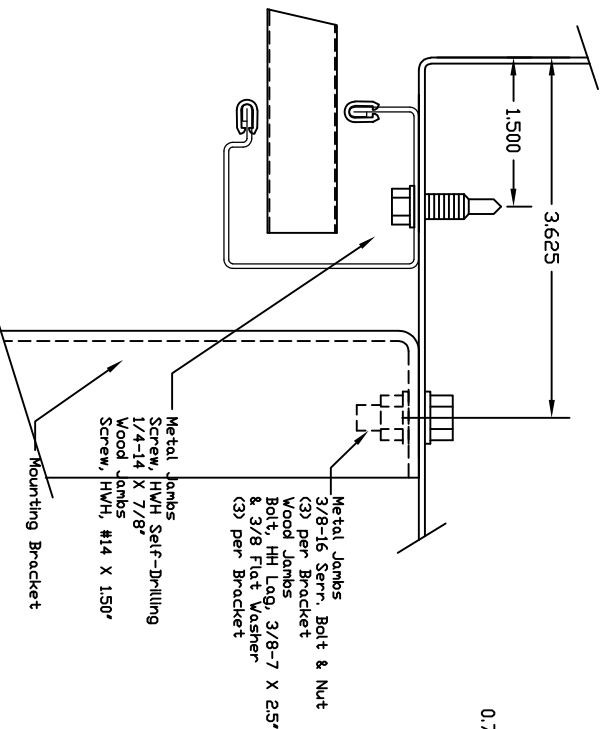
F = Back Room	20"
G = Head Room	22"
H = Side Room	7 1/4"
H = Motor Operator	22"



GUIDE DIMENSIONS - LH SHOWN

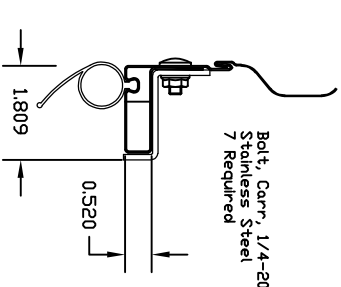


DOOR MOUNTING BRACKET

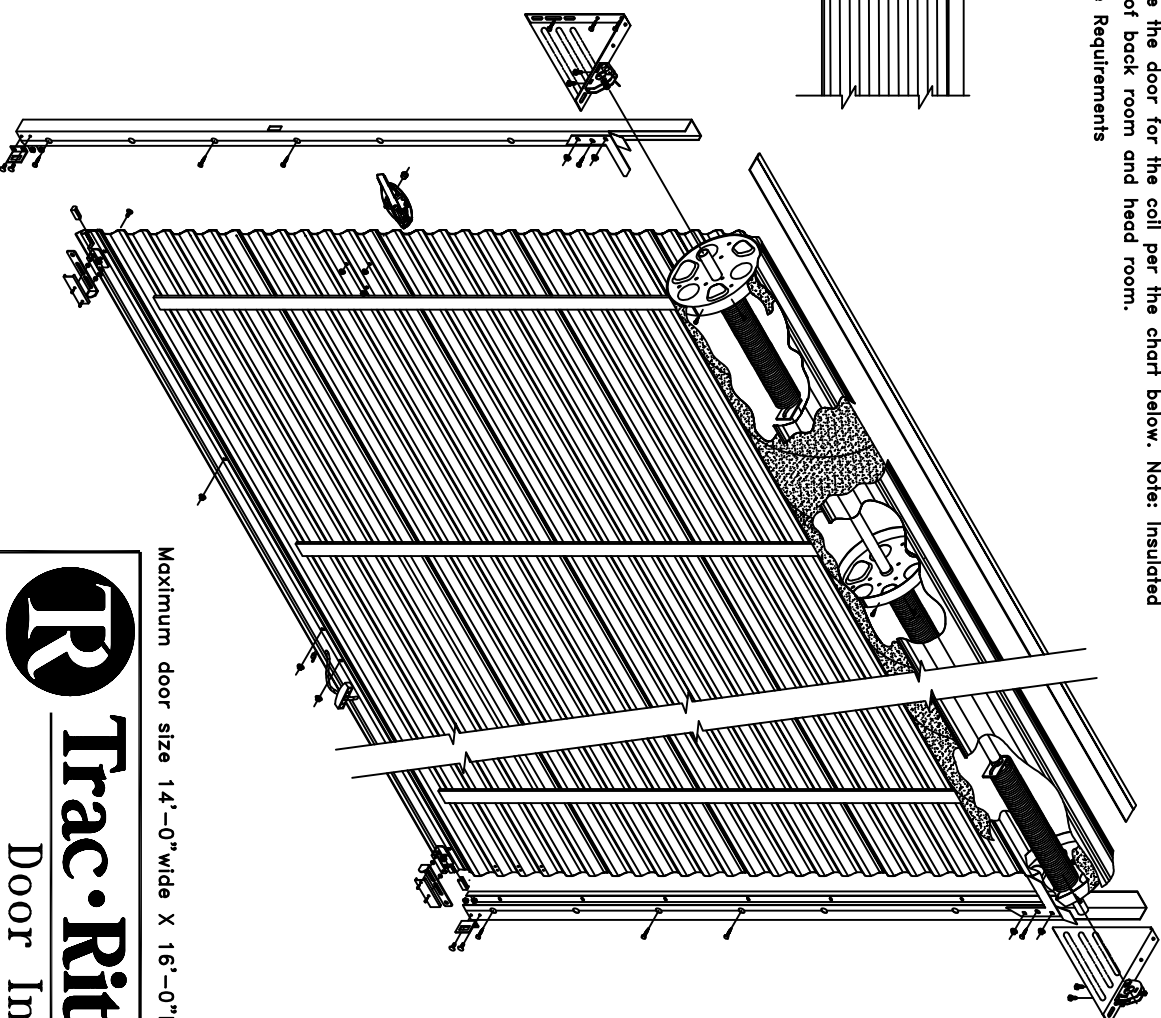


JAMB DETAIL

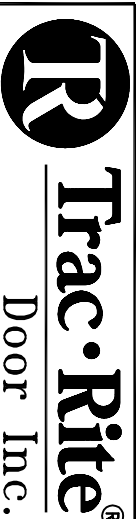
- Metal Jamb
- Screw, HWH Self-Drilling 1/4-14 X 7/8"
- Wood Jamb
- Screw, HWH, #14 X 1.50"
- Mounting Bracket
- Metal Jamb
- 3/8-16 Serr. Bolt & Nut (3) per Bracket
- Wood Jamb
- Bolt, HH Lag, 3/8-7 X 2.5" & 3/8 Flat Washer (3) per Bracket



BOTTOM BAR ASSEMBLY



Maximum door size 14'-0" wide X 16'-0" high.



314 Wilburn Road, Sun Prairie, WI 53590
608-837-7899; TOLL FREE: 800-448-8979
FAX: 608-837-0251

DRAWN BY _____ SCALE: NONE
CHECKED BY _____ SHEET 1 OF 1
DATE _____
Trac-Rite Order # _____